

Index

Door Hardware

| | | | |
|---|------|--|----|
| Deadbolts: | 1-4 | Entrance Gripset: | 14 |
| Deadbolts, Grade 1, T 600 Series, Single & Double Cylinder I/ C | 1 | Entrance Gripset, Sectional, Series 1700 | 14 |
| Deadbolts, Grade 2, T 400 Series, Single & Double Cylinder | 1 | | |
| Deadbolts, Grade 2, T 9000 Series, Single Cylinder | 2 | Exit Devices: | |
| Deadbolts, Grade 2, T 800 Series | 2 | Exit Device, Grade 1, ED200 Series | 15 |
| Deadbolts, Grade 3, Residential Series | 3 | Trim Option, Grade 1, ED200 Series | 15 |
| Deadbolts, Grade 3, T 100 Series | 3 | Exit Device, Grade 2, 2100 Series | 15 |
| | | Exit Device, Grade 2, 27000 Series | 15 |
| | | Trim Options, Grade 2, G27000 Series | 15 |
| Door Closers: | 4-5 | | |
| Door Closer, Grade 1, P1250 Series | 4 | Hinges: | 16 |
| Door Closer, Grade 1, NK4041 Series | 4 | Hinges, BB1509 Series | 16 |
| Door Closer, Grade 1, 900 Series | 5 | | |
| Door Closer, Grade 2, 600 Series | 5 | | |
| | | | |
| Door Locks: | 6-13 | | |
| Knob Lockset, Grade 1, D Series | 6 | | |
| Lever Lockset, Grade 1, ML Series | 7 | | |
| Lever Lockset, Grade 1, DL Series | 8 | | |
| Knob Lockset, Grade 2, Commercial Series | 9 | | |
| Knob Lockset, Grade 2, T Series | 10 | | |
| Lever Lockset, Grade 2, AR (Round Lever) Series | 11 | | |
| Lever Lockset, Grade 2, AL (L-Lever) Series | 11 | | |
| Knob Lockset, Grade 3, Residential Series | 12 | | |
| Lever Lockset, Grade 3, Residential Series | 13 | | |

Storefront Hardware

| | |
|---|----|
| Cylinders: | 16 |
| Keyed Mortise Cylinder | 16 |
| Thumbturn Mortise Cylinder | 16 |
| Rim Cylinders | 16 |
| Dummy Mortise Cylinder | 16 |
| Mortise and Rim Cylinder Hole Covers | 16 |
| Mortise Cylinder Hardened Steel Guard Ring | 16 |
| Mortise Cylinder/Door Guards | 17 |
| DeadLatches (Premium) | 17 |
| Flip Deadbolts (Premium) | 17 |
| Snap in Bridges | 17 |
| Lever Handles (Premium) | 17 |
| Lubricants | 18 |
| Paddles (Premium) | 18 |
| Pivots | 18 |
| Replacement Hinge Kits | 18 |
| Hinge Screws | 18 |
| Hinge Doctor | 18 |
| Storefront Modification Kit | 18 |
| Strikes | 19 |
| Tools | 19 |

Security Hardware

| | |
|--|----|
| Ball Catches | 19 |
| Bike Locks | 19 |
| Bike Lock Keyblanks | 19 |
| Bolts: | 20 |
| Flushbolts | 20 |
| Surface bolts | 20 |
| Padbolts, Medium Duty | 20 |
| Padbolts, Heavy Duty | 20 |
| Check Chain | 20 |
| Combi-Cam | 20 |
| Deadlocks | 21 |
| Door Guard | 21 |
| Door Stops: | 21 |
| Kickdown/Wall/Floor Stops | 21 |
| Door Viewers | 21 |
| Gate Latch (secret) | 22 |
| Glass Showcase Locks | 22 |
| Hasp | 22 |
| Hasp Lock | 22 |
| Key Identifiers | 22 |
| Mailman's Door Opener | 22 |
| Magnetic Key Box | 23 |
| Mailbox Locks | 23 |
| Mail Slots | 23 |
| Nightlatch | 23 |
| Number & Letter Stamping Kits | 23 |
| Padlock | 23 |
| Patio Door & Window Lock | 24 |
| Replacement Door Knobs | 24 |
| Rubber Door Silencer | 24 |
| Security Chain | 24 |
| Security Key Clip | 24 |
| T-Locking Handle | 24 |
| Wrap-Around Plates | 24 |



HALSCO.COM

Handing Chart, Finish Chart, Showroom Display - on inside back cover

GRADE 1-T 600 Series

Deadbolts-Single & Double Cylinder I/C

- Adjustable door thickness 1 3/8" - 1 3/4"
- 3 hour UL/cUL listed
- 1" stainless steel throw deadbolt
- ADA turn lever
- American National Standard ANSI A156.5-1992 Aux. Locks, Gr.1 with 1 CD core & strike
- Standard 2 3/4" backset bolt, 2 3/8" backset bolt upon request
- No exposed mounting screws (available)
- Free- turning, wrench-resistant, tapered cylinder ring



- 2 1/8" cross bore
- Solid extruded brass cylinder with brass shell
- Stainless steel for strength and corrosion resistance
- Simple installation; self-aligning and reversible
- Rose diameter 2 5/8"
- Compatible with all 6/7 pin SFIC
- Limited 1 year mechanical warranty

| Part # | Description | Finish |
|---------------------------|--|--------------|
| HA-T660-26D-I/C | 6/7pin SFIC, standard mounting, | satin chrome |
| HA-T662-26D-IC | 6/7pin SFIC, double cylinder, standard mounting | satin chrome |
| HA-T660-26D-I/C-CONCEALED | 6/7pin SFIC, concealed mounting | satin chrome |
| HA-T662-26D-I/C-CONCEALED | 6/7pin SFIC, double cylinder, concealed mounting | satin chrome |
| HA-T6000-26D-BOLT-2 3/8 | bolt only, 2 3/8" backset | satin chrome |
| HA-T6050-26D-BOLT-2 3/4 | bolt only, 2 3/4" backset | satin chrome |
| HA-T12-100-26D | deadlatch only, 2 3/8" backset | satin chrome |
| HA-T12-103-26D | deadlatch only, 2 3/4" backset | satin chrome |

HA-T6050-26D-BOLT



HA-T12-100-26D

GRADE 2-T 400 Series

Deadbolts-Single & Double Cylinder - optional I/C

- Adjustable door thickness 1 3/8" to 2 1/4"
- 3 hour UL/cUL listed
- 1" bolt throw
- Adjustable backset bolt, 2 3/8- 2 3/4"
- Fits 1 1/2" to 2 1/8" cross bore, 1" edge bore and 1" x 2 1/4" edge preparation
- Solid brass 5-pin cylinder (drilled for 6)



HA-T460-US3

HA-T460-32D-I/C

- Solid brass bolt with reinforced hardened steel roller
- Hardened steel insert (1 7/8" diameter)
- Solid steel door frame strike plate, reinforced with 3" screws to protect against kick in attacks
- Rose diameter 2 1/2"
- "SCI" or "WR5" keyways, keyed different
- Limited 1 year mechanical warranty

| Part # | Description | Finish |
|-----------------|--|-----------------|
| HA-T460-SC-32D | single cylinder, adjustable backset | stainless steel |
| HA-T460-WR-32D | single cylinder, adjustable backset | stainless steel |
| HA-T460-32D-I/C | single cylinder, adjustable backset, 6/7pin SFIC | stainless steel |
| HA-T460-SC-US3 | single cylinder, adjustable backset | polished brass |
| HA-T460-WR-US3 | single cylinder, adjustable backset | polished brass |
| HA-T462-SC-32D | double cylinder, adjustable backset | stainless steel |
| HA-T462-WR-32D | double cylinder adjustable backset | stainless steel |
| HA-T462-SC-US3 | double cylinder adjustable backset | polished brass |
| HA-T462-WR-US3 | double cylinder adjustable backset | polished brass |
| HA-T462-I/C-32D | double cylinder adjustable backset, 6/7pin SFIC | stainless steel |
| HA-T4000-32D | bolt only 2 3/8" - 2 3/4" backset | stainless steel |
| HA-T4000-US3 | bolt only 2 3/8" - 2 3/4" backset | polished brass |
| HA-T8000-32D | springlatch only, 2 3/4" backset | stainless steel |
| HA-T8000-US3 | springlatch only, 2 3/4" backset | polished brass |

HA-T8000-32D



HA-T4000-32D

HA-T4000-US3

*WR = 6 pin, keyed 5 WR5 keyway *SC = 6 pin, "C" keyway



Door Hardware

GRADE 2-T 9000 Series

Deadbolts-Single Cylinder

- Adjustable door thickness 1 3/8" to 2 1/4"
- 3 hour cUL listed
- 1" bolt throw
- Adjustable backset bolt 2 3/8, 2 3/4
- Solid brass 5-pin cylinder



- 4 Available finishes; satin nickel, satin chrome, polished brass & antique brass
- Solid steel door frame strike plate, reinforced with 3" screws to protect against kick in attacks
- Rose diameter 2 3/8"
- "WR5" keyway, keyed different
- Limited 1 year mechanical warranty

| Part # | Description | Finish |
|----------------|-------------------------------------|-----------------|
| HA-T9471-US15 | single cylinder, adjustable backset | satin nickel |
| HA-T9471-US26D | single cylinder, adjustable backset | satin chrome |
| HA-T9471-US3 | single cylinder, adjustable backset | polished brass |
| HA-T9471-US5 | single cylinder, adjustable backset | antique brass |
| HA-T4000-32D | bolt only 2 3/8"- 2 3/4" backset | stainless steel |
| HA-T4000-US3 | bolt only 2 3/8"- 2 3/4" backset | polished brass |



GRADE 2-D 800 Series

Deadbolts-Single Cylinder

New product:
available April 2011



- Adjustable door thickness 1 3/8" – 2"
- Backset deadlatch 2 3/4"
- Solid brass 5-pin cylinder
- 4 Available finishes; satin nickel, satin chrome, polished brass & antique nickel
- Solid steel door frame strike plate, reinforced with 3" screws to protect against kick-in attacks
- "WR5" keyway, keyed different
- Limited 1 year mechanical warranty

| Part # | Description | Finish |
|---------------|--|----------------|
| HA-D841-US15 | single cylinder deadlatch deadbolt, 2 3/4" backset | satin nickel |
| HA-D841-US26D | single cylinder deadlatch deadbolt, 2 3/4" backset | satin chrome |
| HA-D841-US3 | single cylinder deadlatch deadbolt, 2 3/4" backset | polished brass |
| HA-D841-US5 | single cylinder deadlatch deadbolt, 2 3/4" backset | antique brass |
| HA-D800-US15 | springlatch only 2 3/4 " | satin nickel |
| HA-D800-US26D | springlatch only 2 3/4 " | satin chrome |
| HA-D800-US3 | springlatch only 2 3/4 " | polished brass |
| HA-D800-US5 | springlatch only 2 3/4 " | antique brass |



GRADE 3-Residential Series

Deadbolts-Single & Double Cylinder

- Adjustable door thickness 1 3/8" to 2"
- Four-way bolt 2 3/8 - 2 3/4 and drive in
- Fits 1 1/2" to 2 1/8" hole diameter
- Brass 1" throw bolt
- Hardened pin insert & free turning guard
- 5 pin cylinder



HA-54005PB

- 4 finishes available: polished brass, antique brass, antique bronze, stainless steel
- Rose diameter 2 1/2"
- WR5 keyway, keyed different
- Limited 25 year mechanical warranty

| Part # | Description | Finish |
|-------------------|-------------------------------------|-----------------|
| HA-54005PB | single cylinder, adjustable backset | polished brass, |
| HA-54009AB | single cylinder, adjustable backset | antique brass |
| HA-54013ABR | single cylinder, adjustable backset | antique bronze |
| HA-54030SS | single cylinder, adjustable backset | stainless steel |
| HA-53005PB | double cylinder, adjustable backset | polished brass |
| HA-53009AB | double cylinder, adjustable backset | antique brass |
| HA-53013ABR | double cylinder, adjustable backset | antique bronze |
| HA-53030SS | double cylinder, adjustable backset | stainless steel |
| HA-54000AB | bolt only | antique brass |
| HA-54000ABR | bolt only | antique bronze |
| HA-54000PB | bolt only | polished brass |
| HA-54000SS | bolt only | stainless steel |
| HA-54000-4modeAB | 4 way bolt only | antique brass |
| HA-54000-4modeABR | 4 way bolt only | antique bronze |
| HA-54000-4modePB | 4 way bolt only | polished brass |
| HA-54000-4modeSS | 4 way bolt only | stainless steel |



GRADE 3-T 100 Series

Deadbolts-Single & Double Cylinder

- Adjustable door thickness 1 3/8" to 1 3/4"
- UL/cUL listed
- Adjustable 2 3/8" and 2 3/4" backset bolt
- Fits 1 1/2" to 2 1/8" hole diameter
- 1" throw, with a concealed hardened pin steel roller to prevent cutting or sawing



- Solid brass 5 (drilled for 6) pin cylinder for added protection & durability
- Solid steel door frame strike plate, reinforced with 3" screws for protection against kick in attacks
- Rose diameter 2 1/2"
- SCI & WR5 keyways, keyed different
- Limited 25 year mechanical warranty

| Part # | Description | Finish |
|---------------------|-------------------------------------|-----------------|
| HA-T160-SC-US3-UL | single cylinder, adjustable backset | polished brass |
| HA-T160-SC-US32D-UL | single cylinder, adjustable backset | stainless steel |
| HA-T160-WR-US3-UL | single cylinder, adjustable backset | polished brass |
| HA-T160-WR-US32D-UL | single cylinder, adjustable backset | stainless steel |
| HA-T162-SC-US3-UL | double cylinder, adjustable backset | polished brass |
| HA-T162-SC-US32D-UL | double cylinder, adjustable backset | stainless steel |
| HA-T162-WR-US3-UL | double cylinder, adjustable backset | polished brass |
| HA-T162-WR-US32D-UL | double cylinder, adjustable backset | stainless steel |
| HA-T1000-32D | bolt only 2 3/8" to 2 3/4" backset | stainless steel |
| HA-T1000-US3 | bolt only 2 3/8" to 2 3/4" backset | polished brass |



HA-T1000-32D

*WR = 6 pin, keyed 5 WR5 keyway *SC = 6 pin, "C" keyway

GRADE 1-P1250 Series

Door Closer

- UL/cUL listed
- Non-handed
- Adjustable from 2 to 5
- ADA Approved, adjustable opening force
- Thru-bolt mounting
- Factory preset to size 3
- 3 Valve adjustment



- Back check
- Closing speed
- Latching speed
- Parallel arm bracket
- Full cover
- Aluminum & Durodonic finishes
- Limited 10 year warranty

| Part # | Description | Finish |
|-----------------------|--|-----------|
| HA-P1250-AL-HOLD-OPEN | size 2 to 5 closer, hold open | aluminum |
| HA-P1250-AL | size 2 to 5 closer | aluminum |
| HA-P1250-DU | size 2-5 closer | durodonic |
| HA-600COVER-AL | cover for P1250 series closer | aluminum |
| HA-600COVER-DU | cover for P1250 series closer | durodonic |
| HA-520-AL | main arm only for P1250 closer | aluminum |
| HA-525T-AL | T parallel bracket only for P1250 closer | aluminum |



GRADE 1-NK4041 Series

Door Closer

- UL/cUL listed
- Non handed
- Adjustable from 1 to 6
- Cast iron body with full cover
- Complies with ANSI A156.4 Grade 1
- ADA Approved, adjustable opening force
- Manufactured under "ISO 9001" guideline
- Thru bolt mounting
- Aluminum & Durodonic finishes available



- Delayed action available
- Parallel arm bracket
- Full cover
- Tri-style installations: regular, parallel arm or top jamb
- Adjustable sweep & latch speed valves:
separate valves for speed & back check
- Adjustable delayed action closing option; "DA"
- Door opening; regular 120 degrees, parallel arm
180 degrees & top jamb 120 degrees
- Limited 10 year warranty

| Part # | Description | Finish |
|-------------------------------|-----------------------------------|-----------|
| HA-NK4041-AL | heavy duty, size 1-6 closer | aluminum |
| HA-NK4041-DURO | heavy duty size 1-6 closer | durodonic |
| HA-NK4041-DA-AL | heavy duty, delayed action closer | aluminum |
| HA-NK4041-HO-AL | heavy duty, hold open closer | aluminum |
| HA-NK4040-ARM-CUSH-STOP-AL | arm only, cush stop | aluminum |
| HA-NK4040-ARM-CUSH-STOP-DURO | arm only, cush stop | durodonic |
| HA-NK4040-ARM-CUSH-STOP-HO-AL | arm only, cush stop hold open | aluminum |
| HA-NK4040-ARM-CUSH-STOP-HO-DU | arm only, cush stop hold open | durodonic |
| HA-NK4040-ARM-REG-AL | arm only, regular | aluminum |
| HA-NK4040-ARM-REG-DU | arm only, regular | durodonic |
| HA-DP4040-18G-AL | drop plate, min 1 3/4" top rail | aluminum |
| HA-DP4040-18PA-AL | drop plate parallel mount | aluminum |
| HA-DP4040-18TJ-AL | drop plate center MTG 1 3/4" min | aluminum |



GRADE 1-900 Series

Door Closer

- UL/cUL listed
- Non handed
- ADA Approved
- Adjustable from 2 to 6
- Complies with ANSI A156.4 Grade 1
- Factory preset to size 3
- Thru-bolt mounting
- Aluminum & Durodonic finishes available



- Parallel arm bracket
- Full cover
- Maximum 180 degree opening
- Cast aluminum housing with a full metal cover
- Rack and pinion mechanism
- Non freezing hydraulic fluid
- Tri-style installations: regular, parallel arm or top jamb
- Adjustable sweep & latch speed valves
- Adjustable back check control from 70-85 degrees
- Limited 10 year warranty

| Part # | Description | Finish |
|-------------|---------------------------------|-----------|
| HA-900BC-AL | slimline door closer, backcheck | aluminum |
| HA-900BC-DU | slimline door closer, backcheck | durodonic |

GRADE 2-600 Series

Door Closer

- UL/cUL listed
- Non handed
- Surface mounted
- Size 1 through 5 available



- Aluminum & Durodonic finishes available
- Hold open feature available
- Parallel arm bracket available
- Limited 10 year warranty

| Part # | Description | Finish |
|----------------|---|-----------|
| HA-601-AL | size 1 closer | aluminum |
| HA-602-AL | size 2 closer | aluminum |
| HA-603-AL | size 3 closer | aluminum |
| HA-603-DU | size 3 closer | durodonic |
| HA-604-AL | size 4 closer | aluminum |
| HA-604-AL-HO | size 4 closer, hold open | aluminum |
| HA-604-DU | size 4 closer | durodonic |
| HA-605-AL | size 5 closer | aluminum |
| HA-605-DU | size 5 closer | durodonic |
| HA-520AL | main arm for 600 closers | aluminum |
| HA-521AL | forearm for 600 closers | aluminum |
| HA-525T-AL | parallel arm bracket, T bracket for 600/P1250 closers | aluminum |
| HA-525-AL | parallel arm bracket for 601 | aluminum |
| HA-600COVER-AL | cover for 600 closers | aluminum |
| HA-600COVER-DU | cover for 600 closers | durodonic |



GRADE 1-D Series

Knob Lockset

- 3 hour UL/cUL listed- 2 3/4" latch
- Adjustable door thickness 1 3/4" to 2"
- Standard 2 3/4" backset, 2 3/8" backset available
- Accepts most manufacturers aftermarket cylinders
- .1/2 " throw deadlatch, heavy duty
- Stainless steel & polished brass available
- ANSI strike
- Non handed
- 6 pin "SCI" keyway, keyed different, 6/7 pin SFIC option
- Rose diameter 3"
- Limited 1 year warranty



HA-D10RPB



HA-D53RSS



HA-D10RSS



HA-D40RPB



HA-D53RSS-LC-IC



HA-D40RSS

| Part # | Description | Finish |
|--------------------------|--|-----------------|
| HA-D10RPB | passage knob lockset | polished brass |
| HA-D10RSS | passage knob lockset | stainless steel |
| HA-D40RPB | privacy knob lockset | polished brass |
| HA-D40RSS | privacy knob lockset | stainless steel |
| HA-D52RSS | classroom intruder knob lockset | stainless steel |
| HA-D53RPB | entrance knob lockset | polished brass |
| HA-D53RSS | entrance knob lockset | stainless steel |
| HA-D53RSS-LC-IC | entrance knob lockset, 6/7pin SFIC, less cylinder | stainless steel |
| HA-D53RSS-LC | entrance knob lockset, less cylinder | stainless steel |
| HA-D66RSS | double classroom knob lockset | stainless steel |
| HA-D70RPB | classroom knob lockset | polished brass |
| HA-D70RSS | classroom knob lockset | stainless steel |
| HA-D70RSSLC | classroom knob lockset, less cylinder | stainless steel |
| HA-D70RSS-LC-IC | classroom knob lockset, 6/7pin SFIC, less cylinder | stainless steel |
| HA-D72RSS | double classroom knob lockset | stainless steel |
| HA-D80RPB | storeroom knob lockset | polished brass |
| HA-D80RSS | storeroom knob lockset | stainless steel |
| HA-D80RSS-LC | storeroom knob lockset, less cylinder | stainless steel |
| HA-D80RSS-LC-IC | storeroom knob lockset 6/7 pin SFIC, less cylinder | stainless steel |
| HA-D82RSS | storeroom knob lockset | stainless steel |
| HA-D234-DL-SS | deadlatch only, 2 3/4 backset | stainless steel |
| HA-D234-SS | springlatch only, 2 3/4 backset | stainless steel |
| HA-D238-DL-SS | deadlatch only, 2 3/8 backset | stainless steel |
| HA-D238-SS | springlatch only, 2 3/8 backset | stainless steel |
| HA-D334-Link | 3 3/4" extension link for Gr.1 locksets | |
| HA-D5-Link | 5" extension link for Gr.1 locksets | |
| HA-D-knob-tailpiece/fork | tailpiece only for knob lockset | |

HA-D334-Link



HA-D5-Link



HA-D-knob-tailpiece/fork



HA-D238-DL-SS



HA-D238-SS



GRADE 1- ML Series

Lever Lockset

- 3 hour-UL/cUL listed- 2 3/4" latch
- Adjustable door thickness, depending on model, 1 3/8" to 1 7/8", or 1 3/4" to 2"
- Standard 2 3/4" backset, 2 3/8" backset available
- ADA Approved, ANSI A156.2 Series 4000 Grade 1
- Optional removable inner posts
- Accepts most manufacturers aftermarket cylinders
- 1/2" throw deadlatch
- Satin Chrome finish
- Clutched freewheeling lever, spring loaded roses - no lever sag
- Stainless steel chassis
- ANSI strike
- Non handed
- 6 pin "SCI" keyway, keyed different, 6/7 pin SFIC option
- Rose diameter 3 1/4"
- Limited 1 year warranty



HA-ML10-626



HA-ML40-626



HA-ML53-626



HA-ML53-626-I/C

| Part # | Description | Finish |
|------------------------|--|--------------|
| HA-ML10-626 | passage lever lockset | satin chrome |
| HA-ML40-626 | privacy lever lockset | satin chrome |
| HA-ML53-626 | entrance lever lockset | satin chrome |
| HA-ML53-626-CLUTCH | entrance lever lockset, clutch | satin chrome |
| HA-ML53-626-I/C | entrance lever lockset, 6/7pin SFIC | satin chrome |
| HA-ML53-626-I/C-CLUTCH | entrance lever lockset, 6/7pin SFIC & clutch | satin chrome |
| HA-ML70-626 | classroom lever lockset | satin chrome |
| HA-ML70-626-CLUTCH | classroom lever lockset, clutch | satin chrome |
| HA-ML70-626-I/C | classroom lever lockset, 6/7pin SFIC | satin chrome |
| HA-ML70-626-I/C-CLUTCH | classroom lever lockset, 6/7pin SFIC, clutch | satin chrome |
| HA-ML80-626 | storeroom lever lockset | satin chrome |
| HA-ML80-626-CLUTCH | storeroom lever lockset, clutch | satin chrome |
| HA-ML80-626-I/C | storeroom lever lockset, 6/7pin SFIC | satin chrome |
| HA-ML80-626-I/C-CLUTCH | storeroom lever lockset, 6/7pin SFIC, clutch | satin chrome |
| HA-ML82-626 | double storeroom lever lockset | satin chrome |
| HA-ML-234-DEADLATCH | deadlatch, 2 3/4 backset | satin chrome |
| HA-ML-234-SPRINGLATCH | springlatch 2 3/4 backset | satin chrome |



HA-ML-234-SPRINGLATCH



HA-ML-234-DEADLATCH

GRADE 1-DL Series

Lever Lockset

- 3 hour-UL/cUL listed- 2 3/4" latch
- Adjustable door thickness 1 3/4" to 2"
- Standard 2 3/4" backset, 2 3/8" backset available
- ADA Approved, ANSI A156.2 Series 4000 Grade 1
- Accepts most manufacturers aftermarket cylinders
- 1/2 " throw deadlatch
- Satin Chrome finish
- Clutched freewheeling lever, spring loaded roses- no lever sag
- Stainless steel chassis
- ANSI strike
- Non handed
- 6 pin "SCI" keyway, keyed different, 6/7 pin SFIC option
- Rose diameter 3 1/2 "
- Limited 1 year warranty



HA-DL10-26D



HA-DL53-26D



HA-DL40-26D



HA-DL53-IC-LC-26D

| Part # | Description | Finish |
|---------------------------|--|--------------|
| HA-DL10-26D | passage lever lockset | satin chrome |
| HA-DL40-26D | privacy lever lockset | satin chrome |
| HA-DL52-26D | classroom security lever lockset | satin chrome |
| HA-DL52-I/C-26D | classroom security lever lockset, 6/7 pin SFIC | satin chrome |
| HA-DL52-I/C-26D-CLUTCH | classroom security lever lockset, 6/7 pin SFIC, clutch | satin chrome |
| HA-DL53-26D | entrance lever lockset, satin | satin chrome |
| HA-DL53-26D-CLUTCH | entrance lever lockset, clutch | satin chrome |
| HA-DL53-IC-LC-26D | entrance lever lockset, 6/7 pin SFIC, less cylinder | satin chrome |
| HA-DL66-26D | double storeroom lever lockset | satin chrome |
| HA-DL70-26D | classroom lever lockset | satin chrome |
| HA-DL70-26D-CLUTCH | classroom lever lockset, clutch | satin chrome |
| HA-DL70-IC-LC-26D | classroom lever lockset, 6/7pin SFIC, less cylinder | satin chrome |
| HA-DL80-26D | storeroom lever lockset | satin chrome |
| HA-DL80-26D-CLUTCH | storeroom lever lockset, clutch | satin chrome |
| HA-DL80-IC-LC-26D | storeroom lever lockset, 6/7pin SFIC, less cylinder | satin chrome |
| HA-DL82-26D | double cylinder storeroom lever lockset | satin chrome |
| HA-D234-DL-SS | deadlatch only, 2 3/4 backset | satin chrome |
| HA-D234-SS | springlatch only, 2 3/4 backset | satin chrome |
| HA-D238-DL-SS | deadlatch only, 2 3/8 backset | satin chrome |
| HA-D238-SS | springlatch only, 2 3/8 backset | satin chrome |
| HA-D334-Link | 3 3/4 extension link for Gr.1 locksets | satin chrome |
| HA-D5-Link | 5" extension link for Gr.1 locksets | satin chrome |
| HA-D-lever-tailpiece/fork | tailpiece only for lever lockset | |

HA-D334-Link



HA-D5-Link



HA-D238-DL-SS



HA-D238-SS



HA-D-lever-tailpiece/fork



GRADE 2- COMMERCIAL Series

Knob Lockset

- 1 1/2 hour UL/cUL listed- 2 3/4" latch
- Adjustable door thickness 1 3/4" to 2"
- Standard 2 3/4" backset, 2 3/8" backset available
- Accepts most manufacturers aftermarket cylinders
- 1/2 " throw deadlatch
- Stainless steel & polished brass finishes available
- ANSI strike
- Non handed
- 6 pin "SCI" keyway, keyed different, 6/7 pin SFIC option
- Rose diameter 3 1/8"
- Limited 1 year warranty



HA-53PB



HA-40PB



HA-10PB



HA-53SS



HA-40SS



HA-10SS

| Part # | Description | Finish |
|----------------------------|--|-----------------|
| HA-10PB | passage knob lockset | polished brass |
| HA-10SS | passage knob lockset | stainless steel |
| HA-40PB | privacy knob lockset | polished brass |
| HA-40SS | privacy knob lockset | stainless steel |
| HA-53PB | entrance knob lockset | polished brass |
| HA-53SS | entrance knob lockset | stainless steel |
| HA-53SS-LC | entrance knob lockset, less cylinder | stainless steel |
| HA-53SS-2 3/8-BACKSET | entrance knob lockset, 2 3/8 backset | stainless steel |
| HA-53SS-LC-1/C | entrance knob lockset 6/7pin SFIC, less cylinder | stainless steel |
| HA-70PB | classroom knob lockset | polished brass |
| HA-70SS | classroom knob lockset | stainless steel |
| HA-70SS-LC | classroom knob lockset, less cylinder | stainless steel |
| HA-70SS-LC-1/C | classroom knob lockset, 6/7pin SFIC, less cylinder | stainless steel |
| HA-80PB | storeroom knob lockset | polished brass |
| HA-80SS | storeroom knob lockset | stainless steel |
| HA-80SS-2 3/8-BACKSET | storeroom knob lockset, 2 3/8 backset | stainless steel |
| HA-80SSLC | storeroom knob lockset, less cylinder | stainless steel |
| HA-80SS-LC-1/C | storeroom knob lockset, 6/7pin SFIC, less cylinder | stainless steel |
| HA-82SS | double cylinder storeroom knob lockset | stainless steel |
| HA-AL/AR-234-DEADLATCH | deadlatch only for AL/AR , 2 3/4 " backset | |
| HA-AL/AR-234-SPRINGLATCH | springlatch only for AL/AR, 2 3 /4" backset | |
| HA-AL/AR-238-DEADLATCH | deadlatch only for AL/AR, 2 3/8 backset | |
| HA-AL/AR-2 3/8-SPRINGLATCH | springlatch only for AL/AR, 2 3/8 backset | |
| HA-AL/AR-5Link | 5" extension link for Gr.2 knobs | |
| HA-AL/AR-tailpiece | tailpiece only for knob lockset | |



HA-AL/AR-238-DEADLATCH

Specify stainless steel or polished brass



HA-AL/AR-238-SPRINGLATCH



HA-AL/AR-5Link



HA-AL/AR-tailpiece



HA-T40-32D



HA-T53-US3



HA-T53-32D

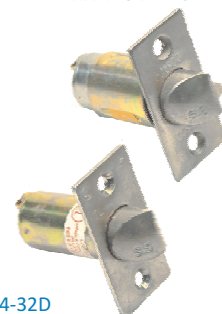


HA-T10-US3

- 3 hour UL/cUL listed- 2 3/4" latch
- Adjustable door thickness 1 3/8" to 1 3/4"
- Standard 2 3/4" backset, 2 3/8" backset available
- Accepts most manufacturers aftermarket cylinders
- 1/2 " throw deadlatch
- Stainless steel & polished brass finishes available
- ANSI 115.2 (160 and 161) door prep strike
- Non handed
- 6 pin "SCI & WR5" keyways, keyed different
- Rose diameter 2 15/16"
- Limited 1 year warranty

| Part # | Description | Finish |
|------------------|--|-----------------|
| HA-T10-32D | passage knob lockset | stainless steel |
| HA-T10-32D-2 3/8 | passage knob lockset, 2 3/8 backset | stainless steel |
| HA-T10-US3 | passage knob lockset | polished brass |
| HA-T40-32D | privacy knob lockset | stainless steel |
| HA-T40-US3 | privacy knob lockset | polished brass |
| HA-T53-32D | entrance knob lockset | stainless steel |
| HA-T53-32D-2 3/8 | entrance knob lockset, 2 3/8 backset | stainless steel |
| HA-T53-LC-32D | entrance knob lockset, less cylinder | stainless steel |
| HA-T53-US3 | entrance knob lockset | polished brass |
| HA-T53-WR-32D | entrance knob lockset | stainless steel |
| HA-T70-32D | classroom knob lockset | stainless steel |
| HA-T70-LC-32D | classroom knob lockset, less cylinder | stainless steel |
| HA-T70-US3 | classroom knob lockset | polished brass |
| HA-T70-WR-32D | classroom knob lockset | stainless steel |
| HA-T80-32D | storeroom knob lockset | stainless steel |
| HA-T80-32D-2 3/8 | storeroom knob lockset, 2 3/8 backset | stainless steel |
| HA-T80-LC-32D | storeroom knob lockset, less cylinder | stainless steel |
| HA-T80-US3 | storeroom knob lockset | polished brass |
| HA-T80-WR-32D | storeroom knob lockset | stainless steel |
| HA-T234-32D | 2 3/4 springlatch only for T series | stainless steel |
| HA-T234-DL-32D | 2 3/4 deadlatch only for T series | stainless steel |
| HA-T238-32D | 2 3/8 springlatch only for T series | stainless steel |
| HA-T238-DL-32D | 2 3/8 deadlatch only for T series | stainless steel |
| HA-T41-005 | T-series 5" backset link, works with 2 3/4 backset | |

HA-T234-DL-32D



HA-T234-32D

GRADE 2- AR, AL, Series

Lever Lockset

- 3 hour UL/cUL listed- 2 3/4" latch
- Adjustable door thickness 1 3/4" to 2"
- ADA approved
- Standard 2 3/4" backset, 2 3/8" backset available
- Accepts most manufacturers aftermarket cylinders
- 1/2 " throw deadlatch
- Satin chrome & polished brass (only on AR levers) finishes available

HA-AR10-605



HA-AL53-626



HA-AL10-626



HA-AR40-626



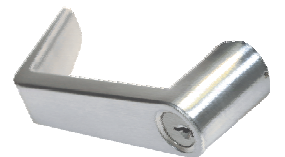
- ANSI strike
- Non handed, clutched design-medium duty (AL levers only)
- Removable outer thru-bolts
- 6 pin "Sc4" keyway, keyed different, 6/7 pin SFIC cores (only on AL levers)
- Rose diameter 3 5/16"
- Limited 1 year warranty

| Part # | Description | Finish |
|----------------------------|--|----------------|
| HA-AR10-605 | passage lever lockset | polished brass |
| HA-AR10-626 | passage lever lockset | satin chrome |
| HA-AR40-605 | privacy lever lockset | polished brass |
| HA-AR40-626 | privacy lever lockset | satin chrome |
| HA-AR53-605 | entrance lever lockset | polished brass |
| HA-AR53-626 | entrance lever lockset | satin chrome |
| HA-AR53-LC-626 | entrance lever lockset, less cylinder | satin chrome |
| HA-AR70-605 | classroom lever lockset | polished brass |
| HA-AR70-626 | classroom lever lockset | satin chrome |
| HA-AR70-LC-626 | classroom lever lockset, less cylinder | satin chrome |
| HA-AR80-605 | storeroom lever lockset | polished brass |
| HA-AR80-626 | storeroom lever lockset | satin chrome |
| HA-AR80-LC-626 | storeroom lever lockset, less cylinder | satin chrome |
| HA-AL170-626 | single dummy lever lockset | satin chrome |
| HA-AL10-626 | passage lever lockset | satin chrome |
| HA-AL40-626 | privacy lever lockset | satin chrome |
| HA-AL53-626 | entrance lever lockset | satin chrome |
| HA-AL53-626-CLUTCH | entrance lever lockset, clutch | satin chrome |
| HA-AL53-626-I/C | entrance lever lockset, 6/7 pin SFIC | satin chrome |
| HA-AL53-LC-626 | entrance lever lockset, less cylinder | satin chrome |
| HA-AL70-626 | classroom lever lockset | satin chrome |
| HA-AL70-626-CLUTCH | classroom lever lockset, clutch | satin chrome |
| HA-AL70-626-I/C | classroom lever lockset, 6/7pin SFIC | satin chrome |
| HA-AL70-LC-626 | classroom lever lockset, less cylinder | satin chrome |
| HA-AL80-626 | storeroom lever lockset | satin chrome |
| HA-AL80-626-CLUTCH | storeroom lever lockset, clutch | satin chrome |
| HA-AL80-626-I/C | storeroom lever lockset, 6/7 pin SFIC | satin chrome |
| HA-AL80-LC-626 | storeroom lever lockset, less cylinder | satin chrome |
| HA-AL/AR-234-DEADLATCH | deadlatch only for AL/AR , 2 3/4 " backset | |
| HA-AL/AR-234-SPRINGLATCH | springlatch only for AL/AR, 2 3/4" backset | |
| HA-AL/AR-238-DEADLATCH | deadlatch only for AL/AR, 2 3/8 backset | |
| HA-AL/AR-2 3/8-SPRINGLATCH | springlatch only for AL/AR, 2 3/8 backset | |
| HA-AL/AR-5-link | 5" backset link works with 2 3/4 backset | |
| HA-AL/AR-tailpiece fork | tailpiece only for lever locksets | |

AR Units have rounded levers and are available in polished brass and satin chrome finishes



AL Units are have "L" shaped levers and are available in satin chrome finish only



GRADE 3-Residential Series

Knob Lockset

- 1 1/2 hour UL/cUL listed- 2 3/4" - 2 3/8 latch (only on UL listed product)
- Adjustable door thickness between 1 3/8" to 1 3/4"
- Adjustable 2 3/4"- 2 3/8" backset
- Fits 2 1/8" hole diameter
- Non handed
- Stainless steel latch
- 4 finishes available: Satin chrome, antique brass, polished brass & antique bronze
- "WR5" keyway, keyed different, 5 pin
- Rose diameter 2 1/2" ·Limited 25 year warranty



HA-13509AB



HA-13526SS



HA-15526SS



HA-11526SS



HA-11505PB



HA-11926

| Part # | Description | Finish |
|---------------------|--|--------------------------------------|
| HA-11505PB | passage knob lockset | polished brass |
| HA-11505PB-BOXED | passage knob lockset, boxed | polished brass |
| HA-11505PB-UL-BOXED | passage knob lockset, UL listed, boxed | polished brass |
| HA-11509AB | passage knob lockset | antique brass |
| HA-11513ABR | passage knob lockset | antique bronze |
| HA-11526SC | passage knob lockset | satin chrome |
| HA-11530SS-BOXED | passage knob lockset, UL listed, boxed | stainless steel |
| HA-11530SS-UL-BOXED | passage knob lockset, boxed | stainless steel |
| HA-13505PB | privacy knob lockset | polished brass |
| HA-13505PB-BOXED | privacy knob lockset, boxed | polished brass |
| HA-13509AB | privacy knob lockset | antique brass |
| HA-13513ABR | privacy knob lockset | antique bronze |
| HA-13526SC | privacy knob lockset | satin chrome |
| HA-13530SS-BOXED | privacy knob lockset, boxed | stainless steel |
| HA-15505PB | entrance knob lockset | polished brass |
| HA-15505PB-BOXED | entrance knob lockset, boxed | polished brass |
| HA-15509AB | entrance knob lockset | antique brass |
| HA-15513ABR | entrance knob lockset | antique bronze |
| HA-15526SC | entrance knob lockset | satin chrome |
| HA-15530SS-BOXED | entrance knob lockset, boxed | stainless steel |
| HA-11926SC/BRZ | passage knob lockset, tulip design | split finish satin chrome/ bronze |
| HA-13926SC/BRZ | privacy knob lockset, tulip design | split finish satin chrome/ bronze |
| HA-15926SC/BRZ | entrance knob lockset, tulip design | split finish satin chrome/ bronze |
| HA-15000-PB | adjustable deadlatch, grade 3 | polished brass |
| HA-15000-SS | adjustable deadlatch, grade 3 | satin chrome |
| HA-15000-4MODE-AB | 4 way adjustable deadlatch, grade 3 | antique brass |
| HA-15000-4MODE-ABR | 4 way adjustable deadlatch, grade 3 | antique bronze |
| HA-15000-4MODE-PB | 4 way adjustable deadlatch, grade 3 | polished brass |
| HA-15000-4MODE-SS | 4 way adjustable deadlatch, grade 3 | satin chrome |
| HA-11000-PB | adjustable springlatch, grade 3 | polished brass |
| HA-11000-SS | adjustable springlatch, grade 3 | satin chrome |
| HA-11000-4MODE-AB | 4 way adjustable springlatch, grade 3 | antique brass |
| HA-11000-4MODE-ABR | 4 way adjustable springlatch, grade 3 | antique bronze |
| HA-11000-4MODE-PB | 4 way adjustable springlatch, grade 3 | polished brass |
| HA-11000-4MODE-SS | 4 way adjustable springlatch, grade 3 | satin chrome |



HA-15000-4MODE



HA-11000-4MODE

GRADE 3-Residential Series

Lever Lockset

- 1 ½ hour UL/cUL listed- 2 3/4" - 2 3/8" latch (only on UL listed product)
- Adjustable door thickness between 1 3/8" to 1 3/4"
- Adjustable 2 3/4"- 2 3/8" backset
- Fits 2 1/8" hole diameter
- Non handed
- Stainless steel latch
- 4 finishes available: Satin chrome, antique brass, polished brass, antique bronze
- "WR5" keyway, keyed different, 5 pin
- Rose diameter 2 1/2"
- Limited 25 year warranty



| Part # | Description | Finish |
|----------------------|---|-----------------|
| HA-L11505PB | passage lever lockset | polished brass |
| HA-L11505PB-UL-BOXED | passage lever lockset, UL listed, boxed | polished brass |
| HA-L11509AB | passage lever lockset | antique brass |
| HA-L11509AB-UL-BOXED | passage lever lockset, UL listed, boxed | antique brass |
| HA-L11513ABR | passage lever lockset | antique bronze |
| HA-L11526SC | passage lever lockset | satin chrome |
| HA-L11530SS-UL-BOXED | passage lever lockset, UL listed, boxed | stainless steel |
| HA-L13505PB | privacy lever lockset | polished brass |
| HA-L13505PB-BOXED | privacy lever lockset, boxed | polished brass |
| HA-L13509AB | privacy lever lockset | antique brass |
| HA-L13509AB-BOXED | privacy lever lockset, boxed | antique brass |
| HA-L13513ABR | privacy lever lockset | antique bronze |
| HA-L13526SC | privacy lever lockset | satin chrome |
| HA-L13530SS-BOXED | privacy lever lockset, boxed | stainless steel |
| HA-L15505PB | entrance lever lockset | polished brass |
| HA-L15509AB | entrance lever lockset | antique brass |
| HA-L15513ABR | entrance lever lockset | antique bronze |
| HA-L15526SC | entrance lever lockset | satin chrome |
| HA-11000-PB | adjustable springlatch, grade 3 | polished brass |
| HA-11000-SS | adjustable springlatch, grade 3 | satin chrome |
| HA-11000-4MODE-AB | 4 way adjustable springlatch, grade 3 | antique brass |
| HA-11000-4MODE-ABR | 4 way adjustable springlatch, grade 3 | antique bronze |
| HA-11000-4MODE-PB | 4 way adjustable springlatch, grade 3 | polished brass |
| HA-11000-4MODE-SS | 4 way adjustable springlatch, grade 3 | satin chrome |
| HA-15000-PB | adjustable deadlatch, grade 3 | polished brass |
| HA-15000-SS | adjustable deadlatch, grade 3 | satin chrome |
| HA-15000-4MODE-AB | 4 way adjustable deadlatch, grade 3 | antique brass |
| HA-15000-4MODE-ABR | 4 way adjustable deadlatch, grade 3 | antique bronze |
| HA-15000-4MODE-PB | 4 way adjustable deadlatch, grade 3 | polished brass |
| HA-15000-4MODE-SS | 4 way adjustable deadlatch, grade 3 | satin chrome |



HA-11000-4MODE-AB



HA-15000-4MODE

- Sectional gripsets
- 4 finishes for 1700 series: lifetime polished brass, antique brass, antique bronze & antique nickel
- Adjustable 2 3/4" – 2 3/8" backset
- 4 keys with every gripset
- Orbit interior knob
- Drive in latches available
- "WR5" keyway, single cylinder
- Limited 1 year warranty

| Part # | Description | Finish |
|---------------|---------------------------------------|-------------------------|
| HA-1700-605 | sectional gripset, adjustable backset | lifetime polished brass |
| HA-1700-609 | sectional gripset, adjustable backset | antique brass |
| HA-1700-613 | sectional gripset, adjustable backset | antique bronze |
| HA-1700-621 | sectional gripset, adjustable backset | antique nickel |
| HA-12-100-605 | deadlatch only, 2 3/8 backset | polished brass |
| HA-12-100-609 | deadlatch only, 2 3/8 backset | antique brass |
| HA-12-100-621 | deadlatch only, 2 3/8 backset | antique nickel |
| HA-12-103-605 | deadlatch only, 2 3/4 backset | polished brass |
| HA-12-103-609 | deadlatch only, 2 3/4 backset | antique brass |
| HA-12-103-621 | deadlatch only, 2 3/4 backset | antique nickel |
| HA-1750-605 | drive in bolt only | polished brass |
| HA-1750-609 | drive in bolt only | antique brass |
| HA-1750-621 | drive in bolt only | antique nickel |
| HA-1760-605 | drive in latch only | polished brass |
| HA-1760-609 | drive in latch only | antique brass |
| HA-1760-621 | drive in latch only | antique nickel |
| HA-1770 | inside mechanism | |
| HA-1780-605 | springlatch only | polished brass |
| HA-1780-609 | springlatch only | antique brass |
| HA-1780-613 | springlatch only | antique bronze |
| HA-1780-621 | springlatch only | antique nickel |
| HA-1790-605 | interior orbit knob only | polished brass |
| HA-1790-609 | interior orbit knob only | antique brass |
| HA-1790-613 | interior orbit knob only | antique bronze |
| HA-1790-621 | interior orbit knob only | antique nickel |
| HA-1795-605 | screw pack | polished brass |

HA-1700-621



HA-1790-605



HA-1760-605



HA-1780-605



HA-1770



GRADE 1-ED200 Series

Rim Exit Devices

- UL/cUL listed
- Ansi prepped
- Positive hex dogging
- Non handed/reversible
- 36"
- 3 functions in 1 panic lock case
(dummy, key operation &/or thumbpiece function)
- Complete installation instructions included
- Limited 5 year warranty



HA-ED201



HA-ED201-TPA

| Part # | Description | Finish |
|--------------------|--------------------------|-----------------|
| HA-ED201-US28 | crossbar | aluminum |
| HA-ED201-US32D | crossbar | stainless steel |
| HA-ED201-TPA-US32D | outside thumb piece trim | stainless steel |
| HA-ED201-TPA-US28 | outside thumb piece trim | aluminum |

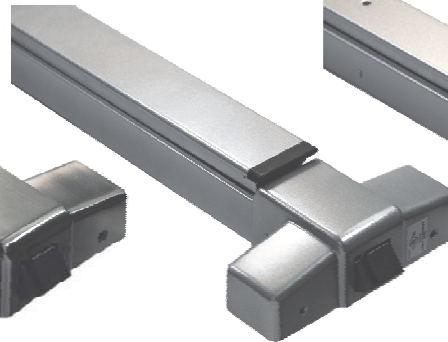
GRADE 2-2100 & 27000 Series

Rim Exit Devices

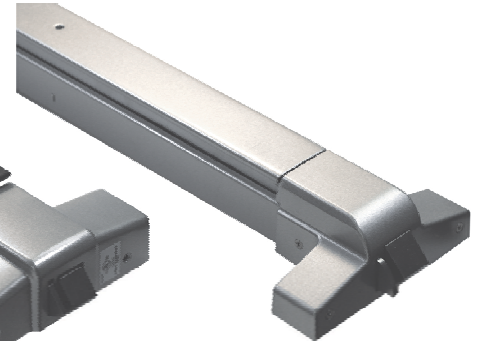
- UL/cUL listed
- Powder coated aluminum finish
or stainless steel
- 36" length
- Non handed/reversible
- Hex key dogging
- Strike shim included
- Blank strike filler plate for cylindrical
latch cut out & strike cut out incl.
- Orbit outside knob & lever trims available
- Complete installation instructions included
- Limited 5 year mechanical warranty



HA-2100-630



HA-2100-AL



HA-27620-FIRE-RATED-AL

| Part # | Description | Finish |
|------------------------|--|------------------------|
| HA-2100-630 | UL/cUL listed | stainless steel |
| HA-2100-AL | UL/cUL listed | aluminum powder coated |
| HA-27620-AL | UL/cUL listed | aluminum powder coated |
| HA-27620-630 | UL/cUL listed | stainless steel |
| HA-27620-FIRE-RATED-AL | UL/cUL listed, fire rated | aluminum powder coated |
| HA-G27110-626 | knob trim, passage | satin chrome |
| * HA-G27132-626 | knob trim, classroom | satin chrome |
| * HA-G27135-626 | knob trim, storeroom | satin chrome |
| * HA-G27140-626 | key in lever trim, classroom | satin chrome |
| HA-G27140-I/C-626 | key in lever trim, 6/7 pin SFIC, classroom | satin chrome |
| * HA-G27150-626 | key in lever trim, storeroom | satin chrome |
| HA-G27150-I/C-626 | key in lever trim, 6/7 pin SFIC, storeroom | satin chrome |
| HA-G27160-626 | key in lever trim, passage | satin chrome |



HA-G27110-626



HA-G27140-626

*six pin "SC1" keyway



Door Hardware Storefront Hardware

BB1509 Series

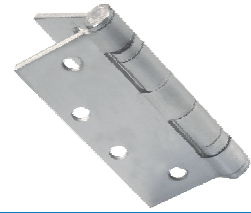
Hinges

Hinges

| | |
|----------------------------|---|
| HA-BB1509-26D-4 1/2 X4 | ball bearing, satin chrome |
| HA-BB1509-26D-4 1/2 X4-NRP | ball bearing, non removable pin, satin chrome |
| HA-BB1509-26D-4 1/2 X41/2 | ball bearing, satin chrome |

Solid steel construction

Hinges



STOREFRONT HARDWARE

Keyed Mortise Cylinder

| | |
|---------------|--|
| HA-984-26D-SC | 1", Schlage C Kwy/per pair, satin chrome |
| HA-984-26D-WE | 1", Weiser Kwy/per pair, satin chrome |

Solid brass construction
Designed to meet most manufacturers depth and spacing
Supplied with Adams Rite cam

Keyed Mortise Cylinder



Thumbturn Mortise Cylinder

| | |
|----------|--------------|
| HA-101TK | satin chrome |
|----------|--------------|

Solid brass construction
Supplied with Adams Rite cam

Thumbturn Mortise Cylinder



Rim Cylinders

| | |
|----------------|--------------------------|
| HA-5010-WR-3 | Weiser kwy, brass |
| HA-5010-WR-26D | Weiser kwy, satin chrome |
| HA-5010-YA-3 | Yale kwy, brass |
| HA-5010-YA-26D | Yale Kwy, satin chrome |

Solid brass construction
Designed to meet most manufacturers depth and spacing

Rim Cylinders



Dummy Mortise Cylinder

| | |
|------------|------------------|
| HA-983-26D | 1", satin chrome |
|------------|------------------|

Precision crafted, extruded solid brass

Dummy Mortise Cylinder



Mortise & Rim Cylinder Hole Covers

| | |
|-------------|---|
| HA-GK-ADD1A | aluminum door hole filler disks, aluminum |
| HA-GK-ADD1D | aluminum door hole filler disks, durodonic |
| HA-GK-ADD2A | door hole filler disks with threaded rod, aluminum |
| HA-GK-ADD2D | door hole filler disks with threaded rod, durodonic |

1 5/8 diameter,
Conceals holes, with integrity to mount new hardware on

Mortise & Rim Cylinder Hole Covers




Mortise Cylinder Hardened Steel Guard Ring


| | |
|------------|--------------|
| HA-CG3-26D | satin chrome |
|------------|--------------|

Mortise Cylinder Hardened Steel Guard Ring



| Mortise Cylinder/Door Guards | | Mortise Cylinder/Door Guards |
|------------------------------|---|--|
| HA-M1 | 1" cylinder protector, inside thickness 3/16", satin alum |  |
| HA-M2 | 1 1/8"-1 1/4" cylinder protector, inside thickness 1/2", satin alum | |
| HA-M3 | 1" cylinder & latch protector, inside thickness 3/16", satin alum | |
| HA-M4 | 1 1/8"-1 1/4" cylinder/latch protector, inside thickness 3/32" satin alum | |
| HA-M4L | left hand offset protector, satin aluminum | |
| HA-M4R | right hand offset protector, satin aluminum | |
| HA-M5 | 1/8" cylinder protector, inside thickness 5/16", satin alum | |
| HA-M6L | left hand electric strike protector, w/cutout. satin aluminum | |
| HA-M6R | right hand electric strike protector, w/cutout, satin aluminum | |
| HA-M7RK-LH | lock guard, satin aluminum | |
| HA-M7RK-RH | lock guard, satin aluminum | |
| HA-M8RK-LH | lock guard, satin aluminum | |
| HA-M8RK-RH | lock guard, satin aluminum | |
| HA-EDG22-AL | door guard, Scotsman, 3/4 thickness, aluminum | |
| HA-EDG22-DU | door guard, Scotsman, 3/4" thickness, durodonic | |


Protects Mortise Cylinders on aluminum doors against attacks.

| Deadlatches (Premium) | | Deadlatches (Premium) |
|-----------------------|------------------|---|
| HA-4510-1 1/8-628-AL | 1 1/8", aluminum |  |
| HA-4510-31/32-628-AL | 31/32", aluminum | |


Heavy zinc plated steel construction
Doggable latchbolt

5/8" latch throw
LH/RH reversible


Key control latch, anti-friction latch
Aluminum faceplate included

| Flip Deadbolts (Premium) | | Flip Deadbolts (Premium) |
|---------------------------|-----------------------------------|---|
| HA-MS1850A-628-1 1/8 | mortise deadbolt 1 1/8", aluminum |  |
| HA-MS1850A-628-31/32 | mortise deadbolt 31/32", aluminum | |
| HA-MS1850A-628-31/32-hook | hook bolt 31/32", aluminum | |
| HA-MS1850A-628-1 1/8-hook | hook bolt 1 1/8", aluminum | |

Aluminum faceplate included

| Snap in Bridges | | Snap in Bridges |
|-----------------|--|---|
| HA-GK-B15 | for deadlatches/deadbolts |  |
| HA-GK-SK1 | spanner key for installing ADD2 discs/ B15 bridges | |

Snap in bridges for Adams Rite locks

| Lever Handles (Premium) | | Lever Handles (Premium) |
|-------------------------|----------------------|---|
| HA-4560-LH-AL | left hand, aluminum |  |
| HA-4560-RH-AL | right hand, aluminum | |

Cast aluminum construction
Powder coated finish

Heavy Duty Spring prevents lever sag
LH/RH reversible

Disk cam plug included

Lubricants

| | |
|-----------------------|-------------------------|
| HA-LOCKSAVER-12.65OZ | 12.65 oz. aerosol can |
| HA-LOCKSAVER-6.1OZ | 6.1 oz. aerosol can |
| HA-Lubit 8 | 1/2 oz. needle tube |
| HA-Lubit-8-Assortment | 36- 1/2 oz. needle tube |

Performance Lubricants
Repels moisture and will not freeze

Allows for easy and cost effective lock maintenance

Lubricants



Paddles (Premium)

| | |
|--------------|-----------------------|
| HA-4590AL-LH | left hand, aluminum |
| HA-4590AL-RH | right hand, aluminum |
| HA-4590DU-LH | left hand, durodonic |
| HA-4590DU-RH | right hand, durodonic |

Extruded aluminum
Cam plug included

Push/pull labels included
LH/RH reversible

Paddles (Premium)

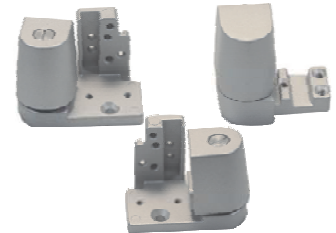


Pivots

| | |
|-------------------|------------------------------------|
| HA-TH1118-B-LH-AL | bottom pivot, left hand, aluminum |
| HA-TH1118-B-RH-AL | bottom pivot, right hand, aluminum |
| HA-TH1118-T-AL | top pivot, aluminum |

Replacements for Kawneer pivots
3/4" offsets

Pivots



Replacement Hinge Kits

| | |
|---------|---------------------------------------|
| HA-20AL | MAC 20 top & bottom hinges, aluminum |
| HA-30DU | MAC 20 top & bottom hinges, durodonic |

Replacement Hinge Kits



Hinge Screws

| | |
|--------------------|-------------------------|
| HA-GK-HSP-50-METAL | #14 screw with #12 head |
| HA-GK-HSP-50-WOOD | #14 screw with #12 head |

Hinge Doctor

| | |
|-------------|---|
| HA-GK-1-3-4 | Hinge Doctor 1,3,4 |
| HA-GK-1-3 | Hinge Doctor 1,2,3, |
| HA-GK-1-4 | Hinge Doctor 1,2,3,4 |
| HA-GK-1 | for std. ball bearing 4 1/2" x 4" hinge |
| HA-GK-2 | for residential hinges (the hulk) |
| HA-GK-3 | for heavy weight, 4 ball bearing hinges |



Storefront Modification Kit

| | |
|-----------|-----------|
| HA-GK-B1A | aluminum |
| HA-GK-B1D | durodonic |

Allows for easy storefront modification

Storefront Modification Kit



Strikes

| | |
|------------|--------------------------------|
| HA-1ASA-PB | 4 7/8 x 1 1/8, polished brass |
| HA-1ASA-SS | 4 7/8 x 1 1/8, stainless steel |

Strikes



Tools

| | |
|----------------------|--|
| HA-SQUEEZEPLAY-MDLT1 | punches hole to accept 1" and 1 1/8" wide x 2 1/4 tall latches |
| HA-GK-MS1 | 24" Mega Screwdriver/impact driver |

Tools



SECURITY HARDWARE PRODUCTS

Ball Catches (Adjustable)

| | |
|---------------|--|
| HA-12400-C15 | solid brass adjustable ball catch, satin nickel |
| HA-12400-C3 | solid brass adjustable ball catch, brass |
| HA-12400-C10B | solid brass adjustable ball catch, oil rubbed bronze |

Ball Catches (Adjustable)



Bicycle Locks

| | |
|------------|---|
| HA-BL101C | 32" cable bike lock |
| HA-BL114D | bike lock 7x12 |
| HA-BL117A | 72" spiral braided cable bike lock |
| HA-BL118 | 30" steel cable Bike Lock |
| HA-BL119A | 60" 4 digit combination spiral bike lock |
| HA-BL134A | disc brake lock for motorcycle |
| HA-BL136 | 72" steel wire bike lock |
| HA-BL590 | bike lock |
| HA-BL84315 | bike lock |
| HA-BL84602 | 32" steel cable with resettable combination bike lock |
| HA-BL85105 | 48" Chain with diskus padlock |


Bicycle Locks





Bike Lock Keyblanks


| | |
|------------|-------------------------------|
| HA-KBBL118 | keyblank for BL117A/118/84315 |
| HA-KBBL136 | keyblank for BL136 |
| HA-KB128 | keyblank for BL134A |
| HA-KB136 | keyblank for BL101C, BL 136 |


Bike Lock Keyblanks


| Flush Bolts | | Flush Bolts |
|---------------|--|---|
| HA-H33-26D | 12" rod, 4 hole, UL listed ,satin chrome |  |
| HA-11010-C3 | wood door flush bolt 6"x3/4", polished brass | |
| HA-DC860-AL | 2 hole recessed flush bolt, aluminum | |
| HA-DC860-DURO | 2 hole recessed flush bolt, durodonic | |

| Surface Bolts | | Surface Bolts |
|---------------|--|---|
| HA-20750-US3 | 8" heavy surface bolt, UL listed, polished brass |  |
| HA-20750-26D | 8" heavy surface bolt, UL listed, satin chrome | |

| Medium Duty Padbolts | | Medium Duty Padbolts |
|----------------------|-----------------|--|
| HA-2064 (4") | accepts padlock |  |
| HA-2066 (6") | accepts padlock | |

| Heavy Duty Padbolts | | Heavy Duty Padbolts |
|---------------------|-----------------|---|
| HA-2069(5") | accepts padlock |  |
| HA-2070-(8") | accepts padlock | |

| Check Chain | | Check Chain |
|-------------|---------------|---|
| HA-3560 | up to 30-1/2" |  |

| Combi-Cam | | Combi-Cam |
|--------------|----------------------|---|
| HA-7850S-26D | 5/8", satin chrome |  |
| HA-7850M-26D | 7/8", satin chrome | |
| HA-7850L-26D | 1 1/8", satin chrome | |

Deadlocks

| | |
|---------|--------------------------------|
| HA-1637 | "Jimmy Proof", single cylinder |
| HA-1738 | "Jimmy Proof", double cylinder |

Deadlocks



Door Guard

| | |
|------------|-----------------|
| HA-8715-CP | polished chrome |
| HA-8715-PB | polished brass |

Door Guard



Kickdown/Floor/Wall/Door Stops

Kickdown/Floor/Wall/Door Stops

Kickdown

| | |
|-------------|--------------------------|
| HA-165-605 | 4 3/4", polished brass |
| HA-165-626 | 4 3/4", satin chrome |
| HA-18-5-26D | 4 hole, 5", satin chrome |

Floor

| | |
|------------|-------------------------|
| HA-200-26D | 1/8" rise, satin chrome |
| HA-218-26D | 1/2" rise, satin chrome |

Wall

| | |
|------------|-----------------------|
| HA-231-26D | convex, satin chrome |
| HA-233-26D | concave, satin chrome |

Door

| | |
|--------------------|------------------------------------|
| HA-DX6015-AL | 8" telescopic door holder |
| HA-DX6015-RTIPS | rubber tips for DX6015 |
| HA-WEDGE-IT-ORANGE | door stop/holder florescent orange |
| HA-WEDGE-IT-GREEN | door stop/holder florescent green |



Door Viewers

| | |
|-------------|---|
| HA-20605 | 200 degree door viewer, up to 1 3/4" door, polished brass |
| HA-20626 | 200 degree door viewer, up to 1 3/4" door, satin chrome |
| HA-2073-606 | 120 degree/UL 90 min. listed door viewer, up to 1 3/4" door thickness, satin brass |
| HA-2073-626 | 120 degree/UL 90 min. listed door viewer, up to 1 3/4" door thickness, satin chrome |
| HA-511-C26D | Peeko door viewer- satin chrome |

Door Viewers



Secret Gate Latch

| | |
|-------------|--------------|
| HA-H601-C15 | satin nickel |
|-------------|--------------|

Secret Gate Latch



Glass Show Case Locks

Glass Show Case Locks

| | |
|-------------------|-------------------------|
| HA-247-CARDED-KD | carded, keyed different |
| HA-247-KA1-RED | carded, keyed alike |
| HA-247-KA2-ORANGE | carded, keyed alike |



Hasp

Hasp

| | |
|----------|----------------------------|
| HA-12760 | hasp with built in padlock |
|----------|----------------------------|



Hasp Lock

Hasp Lock

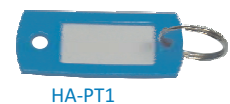
| | |
|----------|---|
| HA-103 | 3" hasplock, polished chrome |
| HA-145 | 4.5" hasplock, polished chrome |
| HA-145KA | 4.5" hasplock, keyed alike, polished chrome |



Key Identifiers

Key Identifiers

| | |
|---------------|---|
| HA-1KRA | key identifiers, 200/box- 6 colours |
| HA-PT1A | key tag, with metal rings- asst- 200/box- 6 colours |
| HA-PT1-BLACK | key tag, with metal rings- multiples of 100 |
| HA-PT1-BLUE | key tag, with metal rings- multiples of 100 |
| HA-PT1-GREEN | key tag, with metal rings- multiples of 100 |
| HA-PT1-RED | key tag, with metal rings- multiples of 100 |
| HA-PT1-WHITE | key tag, with metal rings- multiples of 100 |
| HA-PT1-YELLOW | key tag, with metal rings- multiples of 100 |



Mailman's Door Opener

Mailman's Door Opener

| | |
|---------|---|
| HA-R115 | mailman's door opener with micro switch |
|---------|---|





Magnetic Key Box


Magnetic Key Box

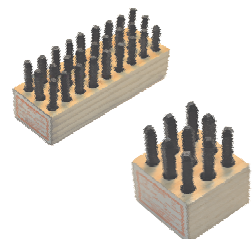
| | |
|---------|-------|
| HA-HAK1 | 12 pc |
|---------|-------|




| Mailbox Locks | | Mailbox Locks |
|-------------------|---|---|
| HA-919 | old style mailbox lock |  |
| HA-1600-04-11 | Ilco-Lori mailbox lock | |
| HA-1650-04-11 | Ilco-Lori mailbox lock | |
| HA-3950 | CMC mailbox lock comes with short/long cam | |
| HA-4011 | Riopel mailbox lock | |
| HA-3970-V-Dustcap | wind mailbox lock for front load with dustcover | |
| HA-3970-W-Dustcap | wind mailbox lock for rear load with dustcover | |
| HA-752MBL | Ilco mailbox lock plug comes with cam & screw | |
| HA-D49K | metal Rousseau mailbox lock latch | |
| HA-D49SE | metal Rousseau mailbox lock | |
| HA-S129L | mailbox lock with long cam | |
| HA-S129S | mailbox lock with short cam) | |

| Mail Slot | | Mail Slot |
|-----------|---|--|
| HA-442-31 | insulated mail slot – aluminum flap/black frame |  |
| HA-442-33 | insulated mail slot – brass flap/black frame | |

| Nightlatch | | Nightlatch |
|------------|--|---|
| HA-738A | night latch- weiser keyway |  |
| HA-738C | replacement rim cylinder-5 pin weiser kwy | |
| HA-728C-KA | replacement rim cylinder-5 pin weiser kwy, keyed alike | |

| Number & Letter Stamping Sets | | Number & Letter Stamping Sets |
|-------------------------------|-----------------------|---|
| HA-01091 | number die set, 1/16" |  |
| HA-01271 | letter die set, 1/16" | |
| HA-02091 | number die set, 3/32" | |
| HA-02271 | letter die set, 3/32" | |
| HA-03091 | number die set, 1/8" | |
| HA-03271 | letter die set, 1/8" | |
| HA-05091 | number die set, 3/16" | |
| HA-05271 | letter die set, 3/16" | |

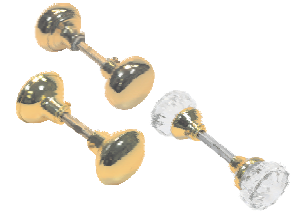
| Padlock | | Padlock |
|---------|-----------------|---|
| HA-333 | ziplock padlock |  |

| Patio Door & Window Lock | | Patio Door & Window Lock |
|--------------------------|------------|---|
| HA-309 | 2 per card |  |

Replacement Door Knobs

| | |
|--------|--------------------------------------|
| HA-18 | door knob with spindle, plated brass |
| HA-25 | glass door knob with spindle |
| HA-197 | door knob with spindle, brass |

Replacement Door Knobs



Rubber Door Silencer

| | |
|-------|---------|
| HA-64 | 100/bag |
|-------|---------|

Rubber Door Silencer



Security Chain

| | |
|--------------------|--------------------------|
| HA-99 | door chainlock |
| HA-66-CHAIN-BRASS | door chain-brass |
| HA-66-CHAIN-CHROME | door chain-chrome plated |
| HA-330 | door chain alarm |

Security Chain



Security Key Clip

| | |
|---------|---------------|
| HA-1220 | 24 clips/card |
|---------|---------------|

Security Key Clip



T-Locking Handle

| | |
|-------|-------------|
| HA-69 | poly bagged |
|-------|-------------|

T-Locking Handle



Wrap-Around Plates

| | |
|----------|--|
| HA-4-PB | 9" wrap plate, 2 3/4"x 1 3/4"x 2 1/8" bore, polished brass |
| HA-4-S | 9" wrap plate, 2 3/4"x 1 3/4"x 2 1/8" bore, stainless steel |
| HA-8-PB | 4 1/2" wrap plate, 2 3/4"x 1 3/4"x 1 1/2" bore, polished brass |
| HA-8-S | 4 1/2" wrap plate, 2 3/4"x 1 3/4"x 1 1/2" bore, stainless steel |
| HA-81-PB | 4 1/2" wrap plate, 2 3/4"x 1 3/4"x 2 1/8" bore, polished brass |
| HA-81-S | 4 1/2" wrap plate, 2 3/4"x 1 3/4"x 2 1/8" bore, stainless steel |
| HA-461-S | 12" wrap plate, 2 3/4"x 1 3/4", 2 hole, 6" C to C, stainless steel |

Wrap-Around Plates



Door remodelling, repairing and reinforcement
 Makes forced entry substantially more difficult
 Heavy duty one-piece construction; provides exception strength



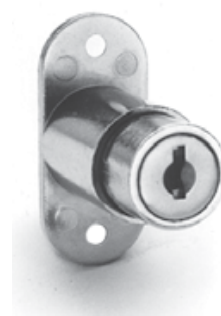
PU-2011

| Cam Locks, Polybagged | | |
|-----------------------|-----------|---|
| HC-2001 | MK-200-14 | Cam lock 1/2", Master keyed, Bright nickel |
| HC-2006 | KA-101-14 | Cam lock 3/8", Keyed alike, Bright nickel |
| HC-2006 | KA-201-14 | Cam lock 3/8", Keyed alike, Bright nickel |
| HC-2006 | KA-301-14 | Cam lock 3/8", Keyed alike, Bright nickel |
| HC-2006 | KD | Cam lock 3/8", Keyed different, Bright nickel |
| HC-2011 | KA-101-14 | Cam lock 5/8", Keyed alike, Bright nickel |
| HC-2011 | KA-201-14 | Cam lock 5/8", Keyed alike, Bright nickel |
| HC-2011 | KA-301-14 | Cam lock 5/8", Keyed alike, Bright nickel |
| HC-2011 | KD-14 | Cam lock 5/8", Keyed different, Bright nickel |
| HC-2011 | MK-200-14 | Cam lock 5/8", Master keyed, Bright nickel |
| HC-2021 | KA-101-14 | Cam lock 7/8", Keyed alike, Bright nickel |
| HC-2021 | KA-201-14 | Cam lock 7/8", Keyed alike, Bright nickel |
| HC-2021 | KA-301-14 | Cam lock 7/8", Keyed alike, Bright nickel |
| HC-2021 | KD-14 | Cam lock 7/8", Keyed different, Bright nickel |
| HC-2021 | MK-200-14 | Cam lock 7/8", Master keyed, Bright nickel |
| HC-2031 | KA-101-14 | Cam lock 1 1/8", Keyed alike, Bright nickel |
| HC-2031 | KA-201-14 | Cam lock 1 1/8", Keyed alike, Bright nickel |
| HC-2031 | KA-301-14 | Cam lock 1 1/8", Keyed alike, Bright nickel |
| HC-2031 | KD-14 | Cam lock 1 1/8", Keyed different, Bright nickel |
| HC-2031 | MK-200-14 | Cam lock 1 1/8", Master keyed, Bright nickel |
| HC-2041 | KA-201-14 | Cam lock 1 3/8", Keyed alike, Bright nickel |
| HC-2041 | KA-301-14 | Cam lock 1 3/8", Keyed alike, Bright nickel |

Sliding Door Locks, Polybagged

Sliding Door Locks

| | | |
|---------|-----------|---|
| HC-2051 | KA-101-14 | Sliding door lock, Keyed alike, Bright nickel |
| HC-2051 | KA-201-14 | Sliding door lock, Keyed alike, Bright nickel |
| HC-2051 | KA-301-14 | Sliding door lock, Keyed alike, Bright nickel |
| HC-2051 | KA-549-04 | Sliding door lock, Keyed alike, Satin brass |
| HC-2051 | KA-549-14 | Sliding door lock, Keyed alike, Bright nickel |
| HC-2051 | KA-560-04 | Sliding door lock, Keyed alike, Satin brass |
| HC-2051 | KA-560-14 | Sliding door lock, Keyed alike, Bright nickel |
| HC-2051 | KA-566-04 | Sliding door lock, Keyed alike, Satin brass |
| HC-2051 | KA-566-14 | Sliding door lock, Keyed alike, Bright nickel |
| HC-2051 | KD-04 | Sliding door lock, Keyed different, Satin brass |
| HC-2051 | KD-14 | Sliding door lock, Keyed different, Bright nickel |
| HC-2051 | MK-200-14 | Sliding door lock, Master keyed, Bright nickel |



HC-2051

Drawer Locks, Polybagged

Drawer Locks

| | | |
|---------|-----------|---|
| HC-2061 | KA-549-03 | Drawer lock, Keyed alike, Bright brass |
| HC-2061 | KA-549-14 | Drawer lock, Keyed alike, Bright nickel |
| HC-2061 | KA-560-03 | Drawer lock, Keyed alike, Bright brass |
| HC-2061 | KA-560-14 | Drawer lock, Keyed alike, Bright nickel |
| HC-2061 | KA-566-03 | Drawer lock, Keyed alike, Bright brass |
| HC-2061 | KA-566-14 | Drawer lock, Keyed alike, Bright nickel |
| HC-2061 | KA-601-03 | Drawer lock, Keyed alike, Bright brass |
| HC-2061 | KA-601-14 | Drawer lock, Keyed alike, Bright nickel |
| HC-2061 | KD-03 | Drawer lock, Keyed different, Bright brass |
| HC-2061 | KD-14 | Drawer lock, Keyed different, Bright nickel |
| HC-2071 | KA-101-14 | Metal drawer lock, Keyed alike, Bright nickel |
| HC-2071 | KD-14 | Metal drawer lock, Keyed different, Bright nickel |



HC-2061



HC-2071

Handing Chart

| | |
|---|---|
| <p>Left Hand</p> <p>Hinges on left -opens in</p> | <p>Right Hand</p> <p>Hinges on right -opens in</p> |
| <p>Left Hand Reverse</p> <p>Hinges on left -opens out</p> | <p>Right Hand Reverse</p> <p>Hinges on right -opens out</p> |
| <p>Left Hand Active</p> <p>Hinge on left -opens in</p> | <p>Right Hand Active</p> <p>Hinges on right -opens in</p> |
| <p>Left Hand Reverse Active</p> <p>Hinges on left -opens out</p> | <p>Right Hand Reverse Active</p> <p>Hinges on right -opens out</p> |

Finish Chart

| | | | |
|-----------------------|---|--|--|
| BHMA Finish | 605 - Bright Polished Brass Plated, Clear Coated on Brass | 606 - Satin Brass Plated, Clear Coated on Brass | 621 - Nickel Plated, (antique nickel) Blackened, Relieved on Brass/Bronze, |
| US/ Canada Equivalent | US3 / C3 / PB / O5 | US4 / C4 | US15A |
| BHMA Finish | 613 - Dark Satin Bronze Toned, Oil Rubbed on Bronze | 628 - Satin Aluminum, Clear Anodized on Aluminum | 630 - Satin Stainless Steel on Stainless Steel |
| US/ Canada Equivalent | US10B / C10B / ABR | US28 / C28 / AL | US32D / C32D / SS |
| BHMA Finish | 625 - Bright Polished Chrome Plated on Steel | 626 - Satin Chrome Plated on Brass/Bronze | 671/FB - (Black), Powder Coated on Aluminum |
| US/ Canada Equivalent | US26 / C26 | US26D / C26D / 26D | US19 / C19 |
| BHMA Finish | 695 - Dark Bronze, Painted on Aluminum/Steel | 609 - Satin Brass, Blackened, Satin Relieved on Brass/Bronze | 619 - Satin Nickel Plated, Clear Coated on Brass/Bronze |
| US/ Canada Equivalent | DURO | US5 / AB | US15 / C15 |

Display Stands

Wall or Floor Mounted

Professional display stands have great value in the presentation of product and your business image.

Contact us for details

